

Advantech Platform Management

Securely Manage
Remote Platforms
and Increase Productivity



Redfish



Industrial Cloud & Video Group
Software Team 2024 Jan.

Software Portal



Value Beyond Hardware Design

Beyond robust hardware design, Advantech has an own software engineering team developing multiple outstanding platform software with up-to-date features which improves availability, serviceability, and usability to minimize costly downtime.

We helps service providers and enterprises extend the cloud to the IoT edge by providing scalable platforms that reliably execute mission and business-critical applications anywhere in the network.

Advantech ICVG Software Team

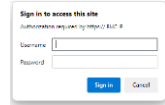


ADVANTECH

Redfish Empowered by Advantech Platform Management

Secure Management Interface

Replace IPMI over LAN
Authentication
Encrypted & Certificate based



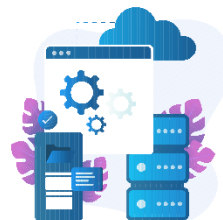
Human Readable Format Easy Scripting

Schemata based
Full API documents for programming

- Advantech_redfish_v8.0.0_white_page.pdf
- Advantech_redfish_technology_v8.00_20237
- Advantech_Redfish_SNMP_User_Manual_v1.00
- Advantech_Redfish_RAID_Management_User_Manual

Common Interface for (Remote) Platform Management

RESTful API for in out-of-band system management
Host Interface specification for in-band management



ADVANTECH
Secured BMC



Standard

Regular Update

Open Standard

Actively maintained specification
Open Source tools
Interoperability
Pass DMTF Redfish-Service-Validator

Extension

Seamlessly manage storage equipment and storage services

Advanced Set of Functions compared to IPMI

Next generation platform Management protocol for various servers, storage, network and others systems

Keep Updating

Latest Redfish v1.18.0 and Swordfish v1.2.4a
Following DMTF and SINA spec. Major update twice per year
Under certain service level agreement, customer can get the firmware update.

Advantech Redfish Feature Overview

✓ User Account and Privileges Management

✓ KCS Channel Privilege Control

✓ System Monitoring

- Sensors, Thermal, Power, Health

✓ Remote Management

- Power control
- Boot device selection

✓ Failure Reporting Utilizing SNMPv3, SMTP, and Redfish Protocols.

- Fault indication
- Events and Notifications

✓ BIOS Configuration, BMC configuration

✓ Advantech OEM API

✓ System/Chassis Inventory Information

- Hard Drive, NIC, CPU/DIMM, Add-in Cards, Power Supplies, Fans

✓ Remote Storage / Virtual media

✓ Storage Management /RAID configuration (Swordfish & Redfish)

✓ Service & Session management

✓ Server Metadata

✓ Software Update (BIOS, FPGA, BMC)

✓ SSL Certificate and Key Update

✘ For a more detailed feature and comprehensive list, please visit the [Software Portal > Support Hub](#) for document downloads

Software Portal

